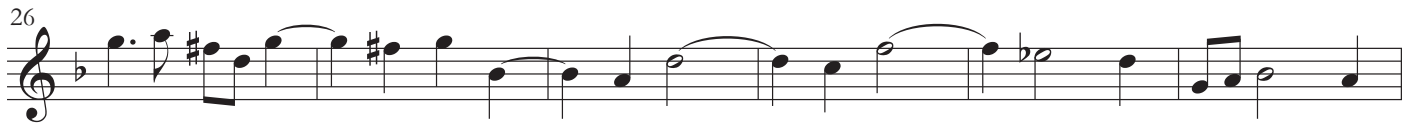


Violino I Solo

A. Corelli



62 **Adagio**



Musical notation for measures 62-65, Adagio tempo. The music is in G minor (one flat) and 3/4 time. It features a melodic line with slurs and ties, starting with a half note G4, followed by quarter notes A4, Bb4, and C5, then a half note D5, and finally a quarter note E5.

65



Musical notation for measures 65-68, Adagio tempo. The music continues the melodic line from the previous section, ending with a quarter note G4.

68 **Allegro**



Musical notation for measures 68-71, Allegro tempo. The music transitions to a faster tempo and features a rhythmic pattern of eighth notes. A double bar line is present at the end of measure 68.

71



Musical notation for measures 71-73, Allegro tempo. The music continues the rhythmic pattern of eighth notes.

73



Musical notation for measures 73-75, Allegro tempo. The music continues the rhythmic pattern of eighth notes.

75



Musical notation for measures 75-77, Allegro tempo. The music continues the rhythmic pattern of eighth notes.

77



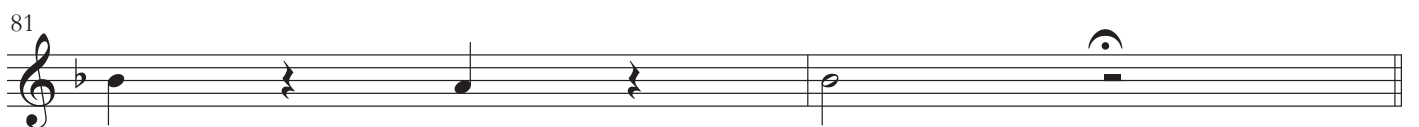
Musical notation for measures 77-79, Allegro tempo. The music continues the rhythmic pattern of eighth notes.

79



Musical notation for measures 79-81, Allegro tempo. The music continues the rhythmic pattern of eighth notes.

81



Musical notation for measures 81-83, Allegro tempo. The music concludes with a final note G4 and a fermata.

83 **Adagio**

86

89

92

95 **Vivace**

103

110

116

123 **Allegro**

128

133

137

142

Musical score for Violino I Solo, measures 148-186. The score is in G minor (one flat) and 3/8 time. It features a series of eighth-note patterns with various dynamics and articulations.

Measures 148-155: Repeating eighth-note patterns with slurs and accents.

Measures 156-161: Similar eighth-note patterns, ending with a fermata.

Measures 162-166: Eighth-note patterns with slurs and accents.

Measures 167-171: Eighth-note patterns with slurs and accents, including a *p* dynamic marking.

Measures 172-177: Eighth-note patterns with slurs and accents, including a *f* dynamic marking.

Measures 178-185: Eighth-note patterns with slurs and accents, including a *p* dynamic marking.

Measure 186: A final measure with a *p* dynamic marking and a repeat sign.

Pastorale ad libitum - Largo

Musical score for Violino I Solo, measures 193-214. The score is in G major (one sharp) and 12/8 time. It features a series of eighth-note patterns with various dynamics and articulations.

Measures 193-196: Eighth-note patterns with slurs and accents.

Measures 197-200: Eighth-note patterns with slurs and accents.

Measures 201-204: Eighth-note patterns with slurs and accents.

Measures 205-208: Eighth-note patterns with slurs and accents.

Measures 209-212: Eighth-note patterns with slurs and accents.

Measures 213-214: Eighth-note patterns with slurs and accents, ending with a *p* dynamic marking.

218 *f* *p* *f*

221

224

227

230

233

236

239

243 *f*

247 *p* *pp*

The image shows a page of musical notation for the first violin solo part of Corelli's Concerto Grosso "Fatto per la notte di Natale". The page contains ten staves of music, numbered 218 through 247. The notation is in treble clef and includes various dynamics such as *f* (forte), *p* (piano), and *pp* (pianissimo). The music features a mix of eighth and sixteenth notes, often beamed together, and includes some rests and phrasing slurs. A dashed line above a note in measure 236 indicates a specific performance instruction. The page ends with a double bar line in measure 247.